



Setting Up Your Dell™ PowerVault™ DL Backup to Disk Appliance

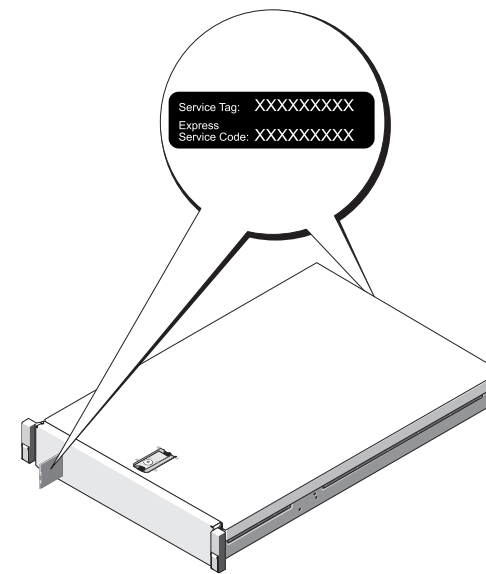
WARNING: Before you set up and operate your Dell PowerVault system, review the safety instructions that came with your system.

Dell Software License Agreement

- Before using your system, please read the Dell Software License Agreement that came with your system.
- You must consider any CD, DVD, or diskette set of Dell installed software as BACKUP copies of the software installed on your system's hard-disk drive.
- If you do not accept the terms of the agreement, please call the customer assistance telephone number. For customers in the United States, call 800-WWW-DELL (800-999-3355). For customers outside the United States, visit support.dell.com, specify your country or region in the Choose a Country/Region drop-down menu, and click Contact Us.

Locating Your System Service Tag

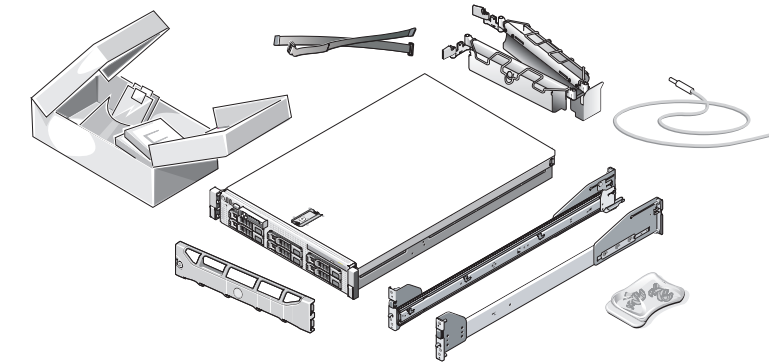
- Your system is identified by a unique Express Service Code and Service Tag number. The Express Service Code and Service Tag are found on the front of the system by pulling out the information tag.
- The Service Tag is also located at the back of the system to the left of the power supplies.
- Write down this information and store it in a safe location. This information is used by Dell to route support calls to the appropriate personnel.



NOTE: The illustrations in this document are not intended to represent a specific system.

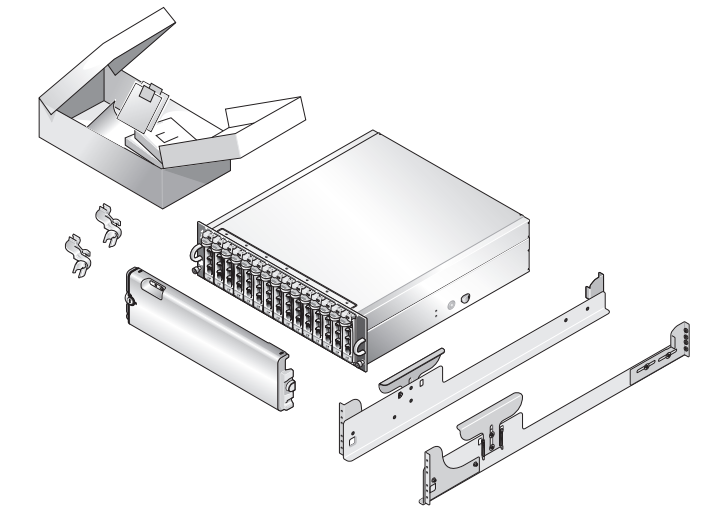
1 Before You Begin

Solution Components



Dell PowerVault DL2xxx System

- Includes:
- System bezel
 - SAS cable (optional)
 - Power cords (2)
 - Power cord retention straps (2)
 - Mounting rails (2)
 - Cable management arm (optional)
 - System media and user documentation



Dell PowerVault MDxxxx Storage Enclosure (Optional)

- Includes:
- System bezel
 - Power cords (2)
 - Power cord retention brackets (2)
 - Mounting rails (2) (optional)

2 Verify Your Solution is Complete

Check for documentation and information updates on support.dell.com/manuals.
Always read the updates first because they often supersede information in other documents.

Network

- An active network with available Ethernet cables and connections.
- A static IP address and DNS server IP address, if not provided by Dynamic Host Configuration Protocol (DHCP).
- Depending on the options selected during setup, you may be required to do the following:
 - Add the DL Backup to Disk Appliance to a Windows Domain Controller.
 - Assign one IPv4 address, if you are connecting to an IPv6 network.

User Account

To setup the DL Backup to Disk Appliance, you must use an account with administrator privileges.

Licenses

Locate the backup application media kit and any optional licenses included with your DL Backup to Disk Appliance. For more information about licenses, see the *Dell PowerVault DL Backup to Disk Appliance User's Guide* at support.dell.com/manuals.

Software Compatibility

If the DL Backup to Disk Appliance is connected to an existing backup environment, the existing backup environment must use the same software version that is installed in the backup appliance.

3 Preinstallation Requirements

Install the DL Backup to Disk Appliance hardware in the following order:

1. Install the Rails for the Dell PowerVault DL2xxx System

For information about installing the rails for the PowerVault DL2xxx system, see the *Rack Installation Instructions* that shipped with the DL2xxx rail kit.

2. Set Up the PowerVault DL2xxx System

For information about setting up the PowerVault DL2xxx system, see the *Dell PowerVault DL2xxx Getting Started Guide* that shipped with the system.

3. Set Up the Optional Dell PowerVault MDxxxx Storage Enclosure(s):

a. Install the Rails for the Dell PowerVault MDxxxx Storage Enclosure(s)

For information about installing the rails for the PowerVault MDxxxx storage enclosure, see the *Rack Installation Instructions* that shipped with the storage enclosure rail kit.

b. Set Up the PowerVault MDxxxx Storage Enclosure(s)

For information about setting up the PowerVault MDxxxx storage enclosure, see the *Dell PowerVault MDxxxx Getting Started Guide* that shipped with the storage enclosure.

c. Connect the PowerVault DL2xxx System to the PowerVault MDxxxx Storage Enclosure(s)

For information about connecting the PowerVault DL2xxx system to the PowerVault MDxxxx storage enclosure, see step 5 on the next page.

4. Install the Cable Management Arm (CMA) (Optional)

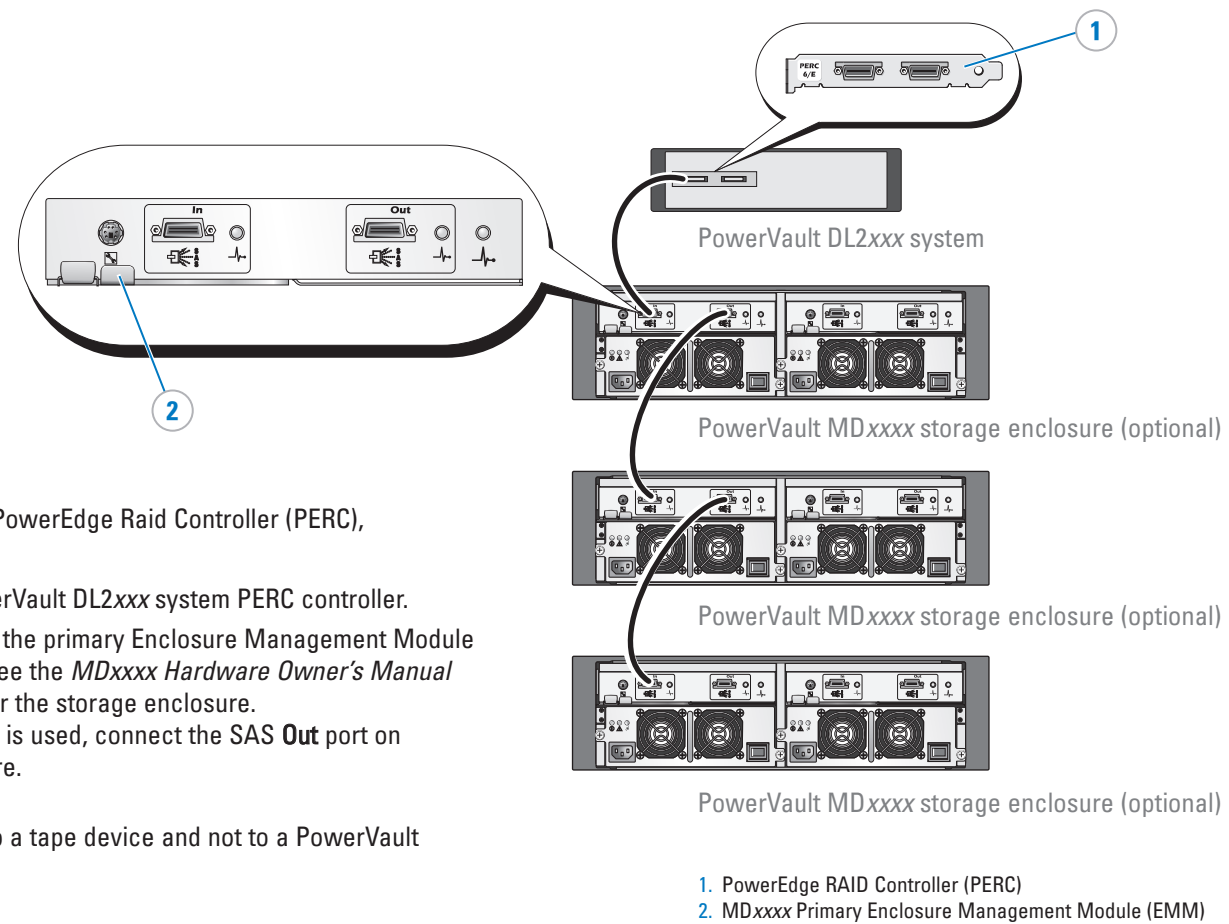
For information about installing the CMA, see the *CMA Installation Instructions* that shipped with the CMA kit.

NOTE: Do not turn on any system(s) at this time.

To connect your PowerVault DL2xxx system to the optional PowerVault MDxxxx storage enclosure, proceed to step 5. If your solution does not include a PowerVault MDxxxx storage enclosure, proceed to step 6.

4 Installing the DL Backup to Disk Appliance Hardware

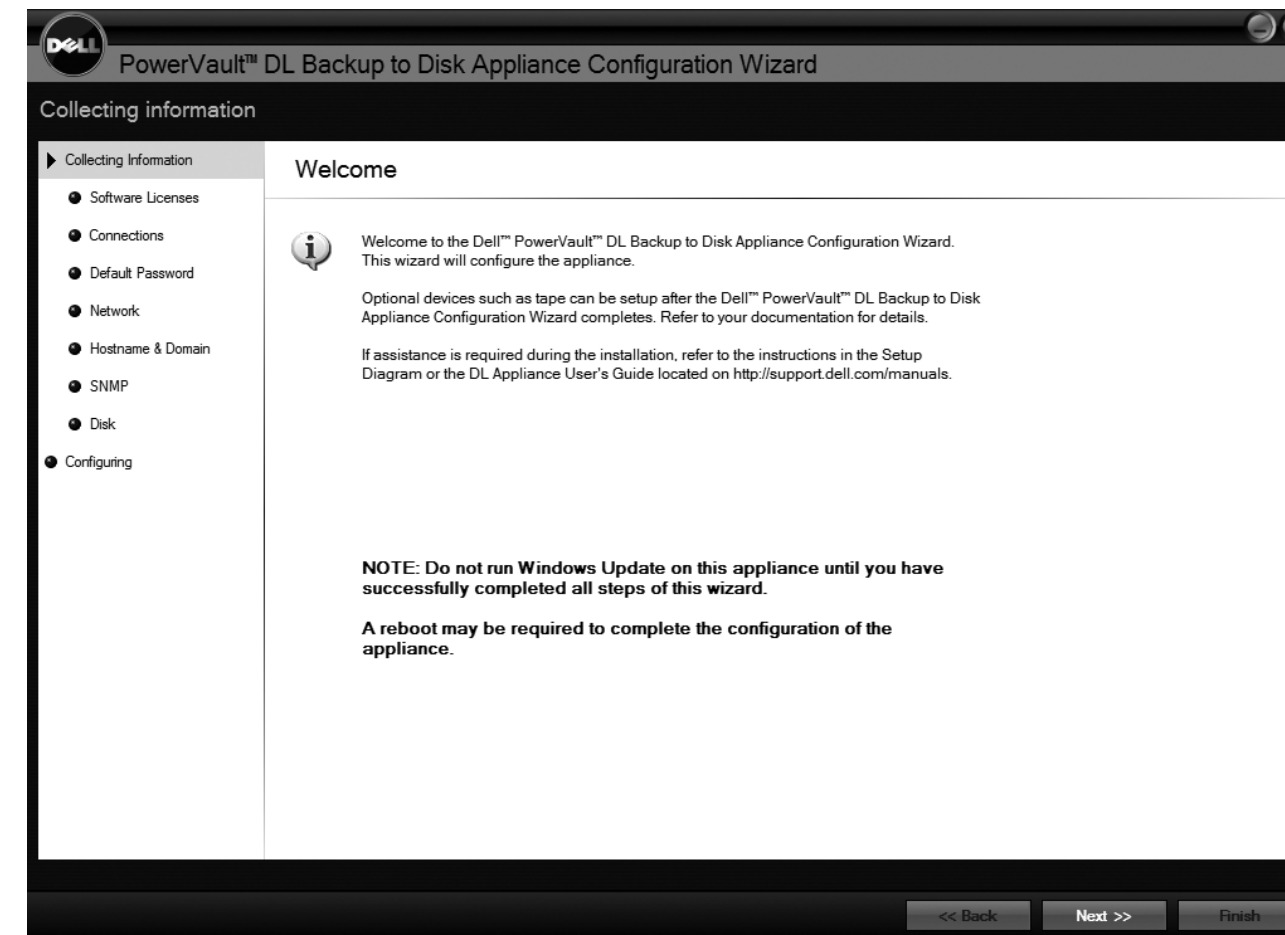
Setting Up Your Dell PowerVault DL Backup to Disk Appliance (continued)



- Connect the PowerVault MDxxxx storage enclosure to the PowerEdge RAID Controller (PERC), located in the PowerVault DL2xxx system:
- 1 Connect one end of the SAS cable to port 0 on the PowerVault DL2xxx system PERC controller.
 - 2 Connect the other end of the SAS cable to the In port of the primary Enclosure Management Module (EMM) on the PowerVault MDxxxx storage enclosure. See the *MDxxxx Hardware Owner's Manual* to determine the location of the primary EMM module for the storage enclosure. If more than one PowerVault MDxxxx storage enclosure is used, connect the SAS Out port on the primary EMM to the SAS In port of the next enclosure.

NOTE: You must connect the optional SAS 5/e controller to a tape device and not to a PowerVault MDxxxx storage enclosure.

5 Connecting the PowerVault DL2xxx System to the PowerVault MDxxxx Storage Enclosure(s)



Turn on the components in the following order:

- 1 MDxxxx storage enclosure(s)
- 2 DL2xxx system and monitor

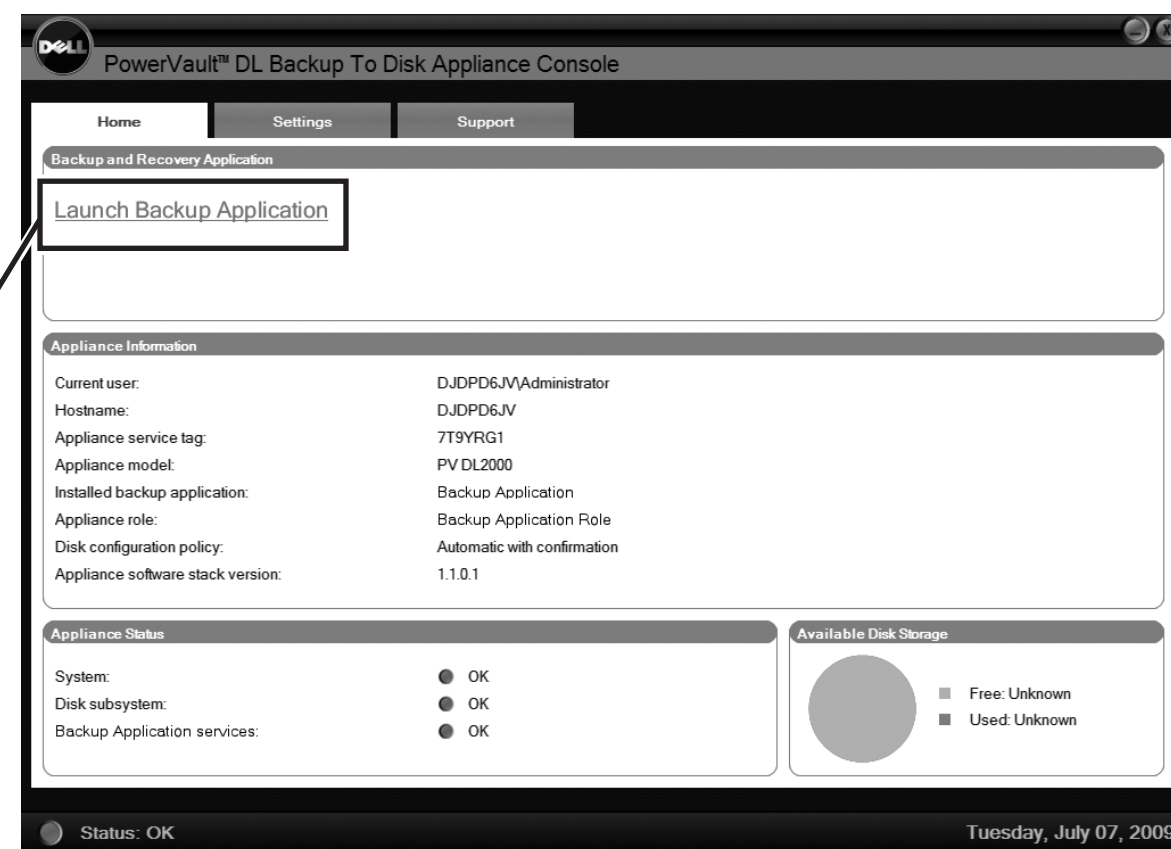
The DL2xxx system may prompt you to enter a password. The default password for the system is **Stor@ge!**

After the password is confirmed, the **PowerVault DL Backup to Disk Appliance Configuration Wizard** appears. Click **Next** and follow the instructions on the screen to complete the software configuration.

6 Configuring the PowerVault DL2xxx Software

After the PowerVault DL Backup to Disk Appliance Configuration Wizard is complete, the PowerVault DL Backup to Disk Appliance Console appears.

Click **Launch Backup Application** to launch the backup application.



7 Launching the DL Backup to Disk Appliance Console

Important Updates

NOTE: Before installing any updates, you must complete setting up the DL Backup to Disk Appliance.

- For latest operating system updates, go to the Microsoft® website at update.microsoft.com.
- To reinstall or update Dell software, download the **Dell PowerVault DL Backup to Disk Appliance Application Recovery and Update Utility** on the Dell Support website at support.dell.com/support/downloads.

Documentation

- For a complete list of solution documents, see the *Dell PowerVault DL Backup to Disk Appliance User's Guide* on the Dell Support website at support.dell.com/manuals.
- For hardware issues, see the *Dell PowerVault DL2xxx Hardware Owner's Manual* or *Dell PowerVault MDxxxx Hardware Owner's Manual* on the Dell Support website at support.dell.com/manuals.

8 Additional Information

Information in this document is subject to change without notice.
© 2009 Dell Inc. All rights reserved.

Reproduction of these materials in any manner whatsoever without the written permission of Dell Inc. is strictly prohibited.

Dell, the DELL logo, and PowerVault are trademarks of Dell Inc.; Microsoft is either a trademark or registered trademark of Microsoft Corporation in the United States and/or other countries. Dell disclaims proprietary interest in the marks and names of others.

December 2009



OC09XKA00



Printed in the U.S.A.